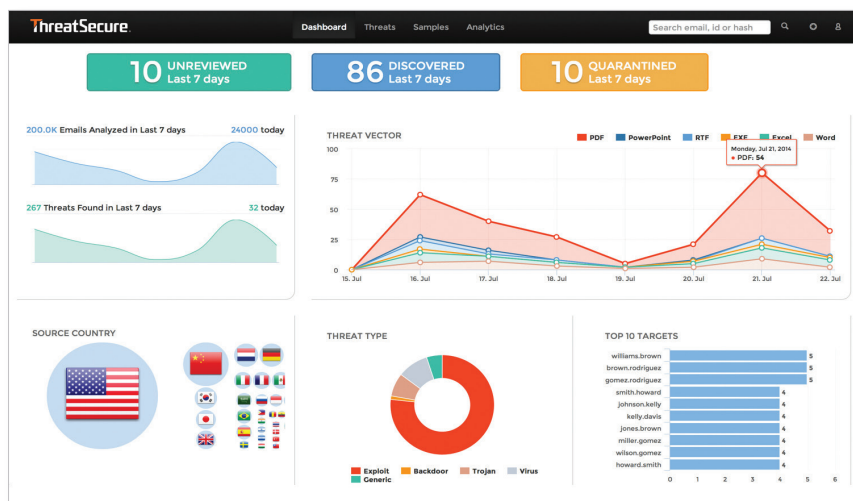


You Can't Stop What You Can't See

ThreatSecure Email gives you the visibility and tools you need to stop attacks in their tracks. It rapidly detects and analyzes threats, provides intelligence around attacks in progress, and delivers malware analysis and remediation packages for faster incident response.

ThreatSecure Email quickly detects both known and unknown threats including spear-phishing and attacks using Zero-day malware. The real advantage lies in its use of preemptive analytics to reduce your exposure to Advanced Persistent Threats (APTs) and data-breaching malware. ThreatTrack's innovative threat detection technology combines static and dynamic analysis with cutting-edge machine learning algorithms to determine whether a suspicious file or link is malicious – quickly identifying malware that evades most cyber defenses.

ThreatSecure Email is the first solution to combine real-time attack intelligence and on-demand malware analysis to provide a deeper understanding of threats and how to respond. Once discovered, on-demand malware analysis and custom remediation packages ensure users can eliminate malware threats and stop breaches before they occur.



Interactive dashboard displays security data and analytics unique to your network

Your #1 Threat Vector

95% of all malware attacks involve email. The ThreatSecure Email appliance fits easily into your existing email infrastructure whether you use on-premise or cloud services or both.

Trusted Solutions for Your Cybersecurity Challenges

Every day, ThreatTrack:

- Defends 10+ million endpoints
- Analyzes as much as 1 million malicious samples
- Secures hundreds of thousands of customers from data-breaching malware

ThreatSecure Delivers for Customers

"My absolute favorite part about ThreatSecure is the interface. It's really gone a long way toward that mythical single pane of glass that all IT executives and security pros have been looking for, where they can get a picture of what's happening on the network without having to log into six or seven different machines."

Global Media Company & ThreatSecure customer

Preemptive Analytics Catches Unknown and Zero Days - Faster

ThreatSecure Email utilizes a combination of static and dynamic behavioral-based detections to find unknown and targeted malware such as APTs and Zero-days that other solutions fail to identify. Utilizing contextual behavioral detection based on machine learning, ThreatSecure Email identifies the characteristic behavior of even unknown malware. The contextual determination leverages ThreatTrack's growing repository of more than 300 million malware samples, creating a more agile and increasingly intelligent threat detection methodology.

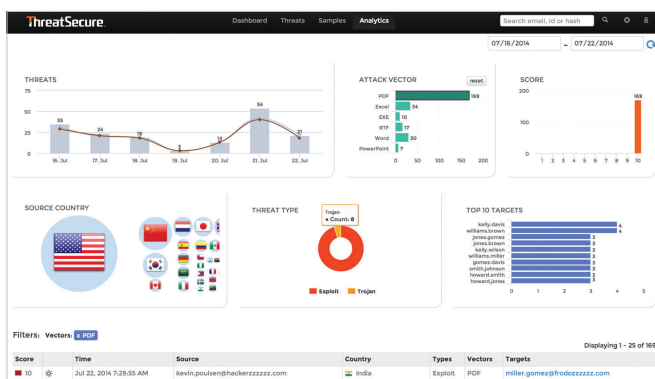
- Provides full forensic details including payload data, detailed threat history and evidence of the behavior of the threat.
- Ability to automatically block, quarantine or manually review potentially malicious files and URLs.

Real-Time Attack Intelligence

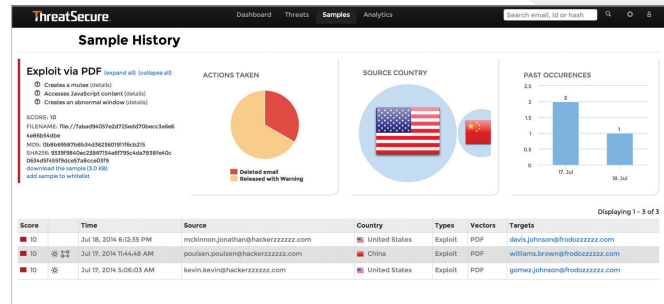
When a new vulnerability is discovered, a new exploit is launched. Attackers are always looking for that new way in and they sometimes succeed. When they do, you need the visibility and intelligence to be able to find and connect the dots. ThreatSecure Email detects when a campaign is being executed – connecting threats, users, patterns and malicious payloads to uncover active APTs in progress.

On-Demand Malware Analysis

Whether you have an in-house CIRT team or security analysts, most organizations don't have the resources to analyze and understand every threat. With the press of a button, ThreatSecure Email will give you real threat and attack intelligence so you can understand your level of exposure.



Spot email attacks in progress.



Receive detailed analysis of malware samples.

ThreatSecure Email's in-depth analysis of discovered threats powers the creation of custom remediation signatures users may deploy to clean compromised systems – regardless of what endpoint security solution is in use.

- Contain and eradicate the threat by cleaning the infected systems and automatically blocking future attacks using the detected malware.
- Block attacks at the perimeter leveraging indicators of compromise on infected hosts, malicious actors, and command and control hosts.

Intuitive and Easy to Manage

ThreatSecure Email's interactive dashboard cuts through the noise to generate threat intelligence unique to your network, enabling easy investigation into patterns, trends and other important security data necessary to identify risks and launch an effective response.

- Provides real-time notification of high-priority threats, integration with existing event management systems, and a task-oriented workflow that focuses the responder on the most critical threats.
- Comprehensive search capabilities provides administrators with quick, easy access to actionable information.

To learn more about ThreatSecure, send email to Sales@ThreatTrack.com, call +1-855-885-5566 or visit www.ThreatTrack.com/TSEmail

© 2016 ThreatTrack, Inc. – ThreatTrack and the ThreatTrack logo are trademarks of ThreatTrack, Inc. in Germany, USA, the United Kingdom and other countries. All product and company names herein may be trademarks of their respective owners. Features are subject to change without notice.